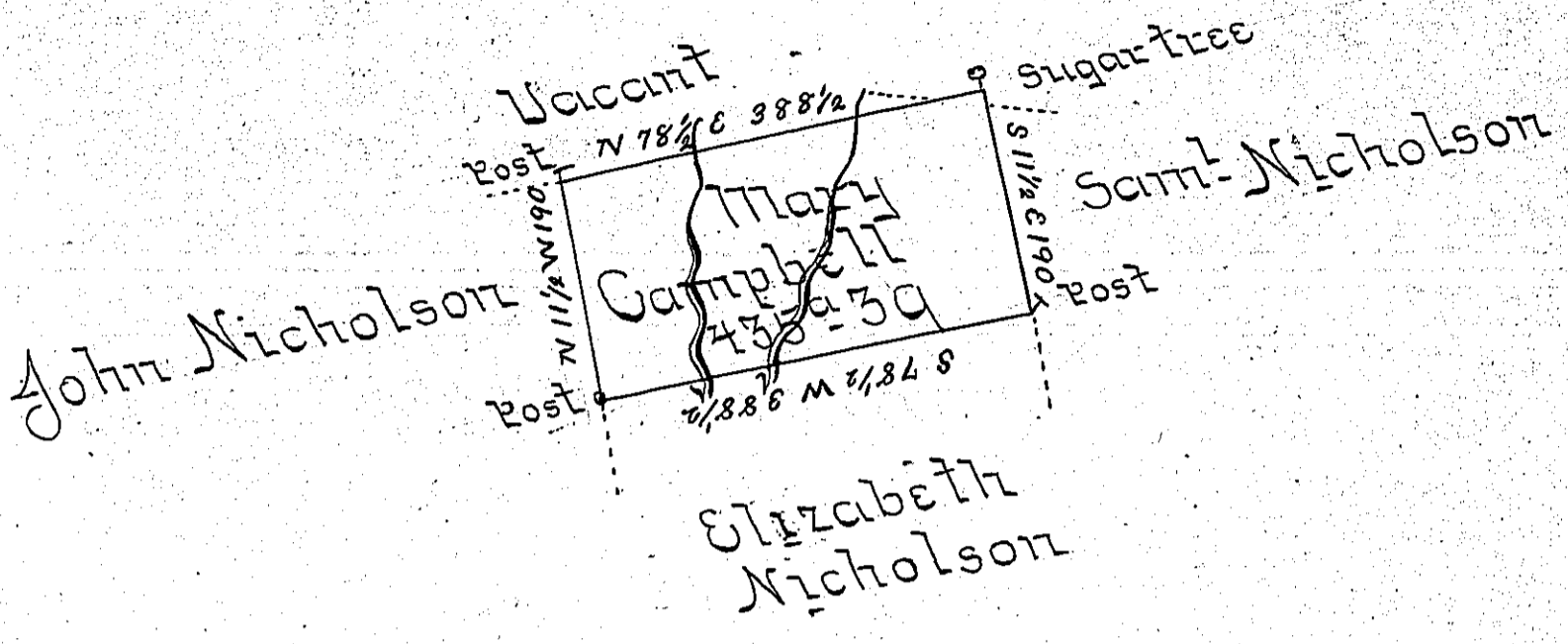


335 4d3sof



In pursuance of a Warrant dated 7<sup>th</sup> September 1789 Surveyed July 8<sup>th</sup> 1793 to Mary Campbell the above tract of land situate on a small stream that empties into the East Branch of Lechawaxin in Northampton County containing four hundred and thirty five Acres & thirty nine Perches and Allowance of Six Per Cent

Chas Crothers D.S.

Wm Brodhead Esq  
Surveyor Genl

IN TESTIMONY that the above is a copy of the original remaining on file in the Department of Internal Affairs of Pennsylvania, made conformably to an Act of Assembly approved the 16th day of February, 1833, I have hereunto set my Hand and caused the Seal of said Department to be affixed at Harrisburg, this thirteenth day of July 1904.

*James D. Brown*  
Secretary of Internal Affairs.